



Friday 9th May 2025

# Halwin Headlines

Despite the short week (we hope you enjoyed Flora Day!), my office has been inundated with visitors from Robins, Owls and Kingfishers to show me their amazing learning! I've been especially dazzled by the writing and creativity this week. Superstars! I've also been impressed this week with our Year 4 children who are busy preparing for their upcoming multiplication check and our Year 1 children who are getting ready for their phonics check in June!

Children who have completed the RWI phonics programme, have completed their termly Star assessment on Accelerated Reader now and will have an updated reading range to choose from in the library. Please encourage your child to read at home and then complete a reading quiz at school.

It's been another lovely week of sunshine and the children have enjoyed playing on the field today. A polite reminder to ensure your child wears sunscreen and brings a sunhat and water bottle in every day please.

Owls class are really enjoying reading 'The Wild Robot' and have been creating some very descriptive writing inspired by the story. They have also been working hard in Maths with fractions and creating their own dance in PE! Kingfishers class enjoyed running their own pretend café during their French lesson this week—lots of gateaux was ordered! Robins have loved learning about Amelia Earhart and her achievements and are busy creating moving mechanisms in DT. As it has been a short week, we are rolling over our words of the week!

Next week, we have a menu swap for Thursday and Friday. Thursday will be fish and chips! It is census day on Thursday and we hope as many children as possible will have a school lunch.

We have now passed the final deadline for payments for our Isles of Scilly trip. If you have not made your final payment yet, please can you do so. Mrs Ellis is very excited about the trip and will be sharing more information soon.

Next Friday (16th May), we would like to invite everyone to wear non-school uniform as a special end of SATs week treat. The Friends of Halwin would appreciate any donations for the tombola for the upcoming summer fair e.g. unused gifts, food and drink treats, new toys/games, beauty products etc. Please drop off in the box in the front reception area. Thank you.

Finally, a special good luck message to our amazing Year 6 pupils for their SATs next week. You should be so proud of all the hard work you have put in to get to this point and we know that you are ready to show everyone how awesome you are! Have a lovely relaxing weekend! Year 6 are welcome to arrive at 8.15am Monday to Thursday in the hall where some breakfast items including fruit, yogurt and croissants will be available for them. Normal school uniform including PE kit for Thursday please.

## Get in touch

You can contact us via phone or email.

01209 860329

[halwinsecretary@croftymat.org](mailto:halwinsecretary@croftymat.org)

## Wrap-Around Care Link

<https://forms.gle/j26LDRNVnewdiXrs9>

Or email Mrs Gee to book

## Attendance

We aim for all our children to have at least 97% attendance throughout the year.

Overall attendance for this week was 90.94%

See below for the attendance for each class last week.

Robins: 97.22%

Owls: 93.75%

Kingfishers: 82.35%



Next weeks lunch is **week 1 NEW MENU**



**Confidence Aspiration Resilience Enjoyment**

# Halwin Heroes



Confidence **Aspiration** Resilience Enjoyment

	Star of the Week
Robins	Harrison
Owls	Amber
Kingfishers	Lloyd

Confidence	Kai
<b>Aspiration</b>	Ruby
Resilience	Amelia
Enjoyment	Rupert B

## Team Points

Blue—101

Red—96

Green—77

Yellow—44



Maths-**Whizz**®

## Hall of Fame

Owls: Poppy, Marley, Harry, Benjamin

Kingfishers: Lloyd, Kai, Eli, Amelia



# Notices and Events

---

## School uniform

- School logo navy blue sweatshirt, hoodie or cardigan
- Plain white polo shirt (White shirts for Year 6, tie provided)
- Charcoal grey or black trousers, shorts, skirt (or pinafore dress KS1)
- Socks – plain white, grey or navy
- Plain black school shoes or plain black trainers
- Blue checked cotton dresses may be worn in the Summer term.

PE kit – School logo navy blue t-shirt, school logo hoodie, navy or black shorts or jogging bottoms, socks, trainers.

Hair below the shoulders should be tied back.

Jewellery should not be worn other than watches and plain stud earrings. Please remove for PE.

Please clearly name your child's uniform.

Second hand uniform is available in the school reception area.

## Homework

The partnership between home and school is very important to us. We recognize that children have spent a busy structured day at school and need time to relax and play. We are also mindful of children's out-of-school activities e.g. swimming, gymnastics, football etc. and we believe that homework activities should not cause conflict or resentment. Our homework approach has therefore been designed to focus on the benefits of reading with your child and developing a love of reading. Reading is our focus, and we ask that parents and carers prioritise and support this essential skill.

**A breakdown of suggested homework is provided below:**

**Robins:** 10-15 minutes of reading a day, record in reading diary

**Owls & Kingfishers:** 10-15 minutes of reading at least 5 times a week

3 blue gems & 3 red gems per week on Maths Whizz (approx. 20 mins)

Times Tables Rockstars 15 minutes x2 a week

Spellings (optional use of Spelling Shed)

You are valuable partners in your children's education and we thank you for your continued support.

# Nyx's Words of the Week



This term we are focusing on developing vocabulary and with the help of Nyx, we are introducing Words of the Week. The children are introduced to 4 words each week and are encouraged to spot them in texts, use them in their speech and also in their writing. It would be great if you can celebrate when they use them at home as well!

**descend**

*Definition: to go down or more to a lower place*

*Synonym: drop*

**seize**

*Definition: to take hold of something quickly and firmly*

*Synonym: grab*

**ghastly**

*Definition: unpleasant and shocking*

*Synonym: horrible*

**sustain**

*Definition: to keep something going or make it last*

*Synonym: maintain*



# Ready, Respectful, Safe



Following the Crofty training day in February about Relational Practice (Paul Dix), we have been working on ensuring our language for behaviour is clear and concise. This term, we have introduced to the children our commitment that all Halwin adults and children are Ready, Respectful and Safe. Our Stars of the Week will be chosen for showing that they are Ready, Respectful and Safe, when we reflect with children about behaviour or choices, we will use the language of Ready, Respectful, Safe and, if you wish, this will give you consistent language for home use as well.

## The Halwin Way



Ready



Respectful



Safe

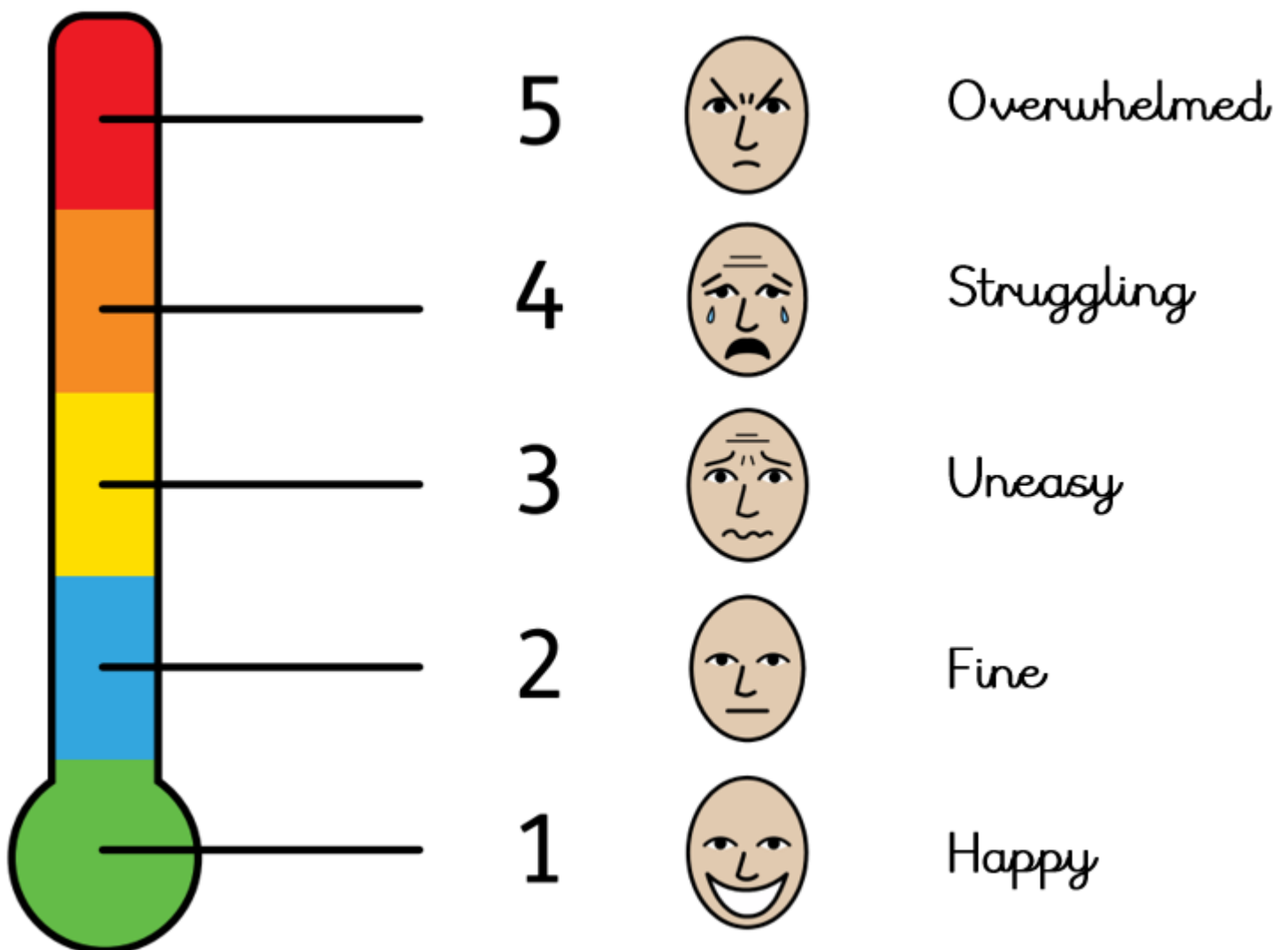


# Notices and Events



We have recently introduced The Incredible 5 Point Scale across the school. You may hear your children talking about it and you can even use it at home as well. The Incredible 5 point scale can help children learn how to identify and manage their own emotions and responses. At each level your child will identify what each rating may look like, feel like, and possible solutions to help them self-regulate. We used this video to introduce it: [Size of Feelings - SEL Sketches](#) which you may want to watch together at home.

## How do you feel?





# Halwin Celebrations



Robins DT



Confidence Aspiration Resilience Enjoyment



# Halwin Celebrations



## Year 6 Writing

Friday 2nd May

Dear Kindest friends,

I hope you are well. *inform*

5.25 I am writing to address you of our latest issue that our planet is facing to this day. Animals across the world are dying only just for food. As caring people, I know you care about the animals on our planet so I hope you will change your diet. It is heartbreaking to think that, every drumstick you buy, is one precious pet lost.

Every year in the UK, thousands of deer, who deserve a life as well, are poached merely only for clothes. Only 4.5% of people in the UK are vegetarians but for a reason as it is very healthy because it reduces risk of heart disease, lower blood pressure and some specific cancers.\*

Nevertheless, things can change! If I ~~decide~~ *decide* to buy healthier good items, our planet's livestock will thrive! We must question ourselves, can our altered diets change creatures' lives? Moreover, as consumers we have the chance to influence restaurants. If they realise we care for our animals, difference might occur. Therefore, I plead you to be mindful what you eat. Together, we can forge a meat-free future for companies across the world! The time we act has arrived; let us not allow another creature to be slaughtered for good.

\*\*\*as a community -

Yours Kindest regards,

*alternative new?*  
\* I understand you may enjoy the taste of bacon, but just think of the animals' lives! Always try different ~~oppor~~ options like quorn which supplies most vitamins but for some like B12, you can take tablets.

\*(Brilliant)



# Diary Dates



w/c 12th May	Year 6 SATs week Free breakfast from 8.15am for Year 6 pupils.
Friday 16th May	Non-School Uniform Day (Tombola donations)
Friday 23rd May	Parent Assembly
w/c 26th May	Half Term
Monday 2nd June	INSET day—school closed to pupils
w/c 9th June	Sustainability Week
Tuesday 10th June	Family Hive 3.15-4pm
Thursday 12th June	Robins Beach Visit
w/c 16th June	Y5/6 Isles of Scilly Residential
Monday 23rd June & Friday 27th June	Bikeability
Wednesday 25th June	Elemental—Owls and Kingfishers
Thursday 26th June	Class Photos
Friday 27th June	Parent Assembly

# Diary Dates



Tuesday 1st July & Wednesday 2nd July	Helston Transition Days
Tuesday 1st July	Eco Council Summit @ Treloweth NEW DATE
Thursday 3rd July	Sports Day (am) RNLI water safety talk (pm)
Tuesday 8th July	Coastal Crew Summit @ Porthleven NEW DATE Family Hive
Thursday 10th July	Open Morning
Wednesday 16th July	Fairview Farm visit—EYFS (am) and Year 6 (pm)
Friday 18th July	End of Year Celebration Assembly—Parents welcome
Monday 21st July	Y6 Leavers Evening 6pm
Tuesday 22nd July	Last day of Term
Wednesday 23rd July	INSET day—school closed to pupils

# WEEK 1



W/C: 21/04/2025, 12/05/2025, 02/06/2025, 23/06/2025, 14/07/2025, 15/09/2025

Thursday and Friday  
Menu will swap this  
week

		MONDAY	TUESDAY	WEDNESDAY	THURSDAY	FRIDAY
HOT DISHES	OPTION 1	Cheese and Tomato Pizza Served with Garlic and Herb Bread 	BBQ Chicken Served with Rainbow Rice 	Roast Chicken Served with Roast Potatoes and Gravy	Classic Beef Burger Served with Potato Wedges	Battered Pollock Served with Chips 
	OPTION 2	Cheesy Bean Tortilla Toastie Served with Potato Wedges 	Macaroni Cheese  	Roast Quorn Served with Roast Potatoes and Gravy 	Quorn Burger Served with Potato Wedges  	Veggie Fingers Served with Chips   
	OPTION 3	Tomato Pasta Fresh, Homemade Tomato Sauce with Pasta  	Tomato Pasta Fresh, Homemade Tomato Sauce with Pasta  	Tomato Pasta Fresh, Homemade Tomato Sauce with Pasta  	Tomato Pasta Fresh, Homemade Tomato Sauce with Pasta  	Tomato Pasta Fresh, Homemade Tomato Sauce with Pasta  
HOT DISHES ARE SERVED WITH TWO VEGETABLES AND FRESHLY BAKED BREAD						
DELI DISHES	OPTION 4	Ham Wrap	Ham Baguette	Cheese Wrap 	Ham Baguette	Ham Wrap
	OPTION 5	Cheese Baguette 	Tuna and Sweetcorn Wrap	Egg Mayo Baguette 	Cream Cheese and Cucumber Wrap 	Cheese Baguette 
DELI DISHES ARE SERVED WITH MIXED SALAD						
DESSERT		Shortcake 	Chocolate Brownie 	Banoffee Pie	Ginger Biscuit Served with Fruit 	Strawberry Ice Cream



## BAKED POTATOES SERVED DAILY

With a choice of toppings 



## AVAILABLE DAILY

Fresh fruit, salad, yoghurt and water



Vegetarian



Vegan



Oily Fish



Wholegrain



Fruity!



Nutritionist's Choice

Our menu is subject to change. Please be assured that all notified medical diets and allergy requirements will be safely catered for



# Notices and Events



## Attendance

The updated attendance policy is available on the school website: <https://halwin.croftymat.org/>

There are 175 non-school days in a year and 190 school days each year.						
Absence in terms of days	190 school days in each year	7 days absence	10 days absence	19 days absence	28 days absence	47 days absence
	190 days for your child's education	183 days in school	180 days in school	171 days in school and the equivalent of a month not in school that year	162 days in school  If it 85% each year, your child is missing the equivalent of a year of education over their time at primary school	143 days in school
percentage	100%	96%	95%	90%	85%	75%
	<b>Good</b> -Best chance of success -Gets your child off to a flying start -Helps their confidence, social development as well as their academic progress -Over 97% is considered excellent attendance		<b>Some Concern</b> -Harder for your child to make progress -School starts tracking your child's attendance closely, <u>Medical</u> evidence may be required to authorise further absences linked to illness		<b>Worrying</b> -Your child is now classified as a 'persistent absentee'  - Education Welfare Officer involvement is likely	
	<b>Serious Concern</b> -Having a significant impact on your child's education and well-being  -Legal Action may be taken					

# Attendance

---



School doors open at 8.40am and registration is taken at 8.45am. Children who arrive after the registration period has closed (9.05am) may be recorded with an unauthorised absence mark for the morning session.

The Government does not support parents taking children out of school, unless the school agrees this is appropriate under 'exceptional circumstances'. The DfE does not consider a need/desire for a holiday or other absence for the purpose of leisure/recreation to be an exceptional circumstance. If you consider that your request for absence is exceptional you will need to complete the 'Leave of Absence Exceptional Circumstances' request form. Letters will not be accepted. This form should be returned to the school office at least 15 school days before the start of the absence. A response will be sent to you as soon as possible. If leave is not authorised and you nevertheless withdraw your child from school, the absence will be recorded as unauthorised absence. There is now a national threshold of 10 unauthorised sessions (equivalent to 5 school days) within a rolling 10 school week period for when a penalty notice must be considered. Under the new rules, taking your child out of school for a one-week holiday will now mean that a penalty notice must be considered. Please note the legal information below:

If your child is absent from school without authorisation, you will be committing an offence under the Education Act 1996. We may submit a request to Cornwall Council for a Penalty Notice to be issued, in accordance with Sections 444A and 444B of the said Act. Penalty Notices are issued per liable parent, per child and each carry a fine of £80 if paid within 21 days or £160 if paid after this but within 28 days.

If your child is further absent from school without authorisation within any 3-year period, you will be committing a further offence under the Education Act 1996. We may submit a request to Cornwall Council for a Penalty Notice to be issued, in accordance with Sections 444A and 444B of the said Act. Penalty Notices for a second offence are issued per liable parent, per child and each carry a fine of £160, payable within 28 days.

Importantly, fines per parent will be capped to two fines within any three-year period. Once this limit has been reached, other action such as a parenting order or prosecution will be considered.

Failure to pay the Penalty Notice may also result in legal action. If you are prosecuted and attend court because your child has not been attending school, you could get a fine of up to £2,500. Cornwall Council may also apply for the costs incurred in taking the matter to Court, including legal costs.

Absence not authorised by the school may also result in a prosecution in the Magistrates' Court under Section 444(1) or Section 444(1A) of the Education Act 1996, leading to a fine of up to £2,500 and/or a custodial sentence. Again, Cornwall Council may also apply for the costs incurred in taking the matter to Court, including legal costs.

Money raised from fines is only used by the local authority to cover the costs of administering the system, and to fund attendance support. Any extra money is returned to the government.

'Parent' as set out in Section 576 of the Education Act 1996, defines parent to include: natural parents, whether they are married or not; any person or body who has parental responsibility for a child (as defined by the Children Act 1989) and; any person who, although not a natural parent, has care of a child. Having care of a child means a person with whom a child lives and who looks after a child, irrespective of what their relationship is with said child.



**"THIS MORNING,  
HE HAD A  
RUNNY NOSE...  
BUT LOOK AT  
HIM NOW!"**

**MOMENTS  
MATTER,  
ATTENDANCE  
COUNTS.**



**HM Government**

Search NHS school illness guidance to find out more.

**NHS**





**“THIS MORNING,  
HE WAS WORRIED  
ABOUT SCHOOL...  
BUT LOOK AT HIM  
NOW!”**

**MOMENTS  
MATTER,  
ATTENDANCE  
COUNTS.**



**HM Government**

Search the Education Hub to find out more

**NHS**

# MENTAL HEALTH SUPPORT TEAM - MHST



Parents and Carers  
Please join us for a  
5 session online  
workshop for  
**Behaviour as  
Communication  
- Parent support**

Various morning and afternoon sessions available starting week commencing 9 June 2025, please select when you sign up. Please note you will be signed up to the same day and time for the duration of the workshop.

This workshop provides parents with practical strategies to foster positive behaviour and communication at home.

TO BOOK A PLACE PLEASE COMPLETE THE ONLINE FORM [HERE](https://forms.office.com/E/BVHDPYUCQA)  
[HTTPS://FORMS.OFFICE.COM/E/BVHDPYUCQA](https://forms.office.com/E/BVHDPYUCQA)

OR SCAN THE QR CODE BELOW



This workshop is open to parents/carers of primary aged children enrolled in Reception to Year 6 in any school in Cornwall





# MENTAL HEALTH SUPPORT TEAM - MHST

**Parents and Carers** - please join us for a 5 session online workshop where we will teach you **practical strategies to support your child with their anxiety and worries**

Various morning and afternoon sessions available starting week commencing 9 June 2025 , please select when you sign up. Please note you will be signed up to the same day and time for the duration of the workshop.

To book a place please complete the online form **HERE**  
<https://forms.office.com/e/0qRnKmCw1i> or scan the QR code



This workshop is open to parents/carers of primary aged children enrolled in Reception to Year 6 in any school in Cornwall





# Halwin Hive

Summer 2025

Tues 29th Apr

Tues 10th June

Tues 8th July

Join us for our  
regular fun  
family session  
3.15pm  
School Hall

Chat with other  
parents, play a  
game, borrow a  
book, have a  
drink and cake

Parent Forum  
Have your say –  
talk to Mrs Carr  
about any whole  
school issues



We need live music for the

# Helston Pride Picnic!

**Saturday June 28th 12pm - 4pm**

**Coronation Park, Helston, TR13 0RA**

Live music from local school & community groups

LGBTQ+ support groups

Lovely people

Creating a safe space for everyone in our community,  
especially our Trans and Non-Binary friends.

## ATTENTION

### Young singers & players!

We are looking for groups or soloists,  
any age (up to 18) and any style  
to perform live at this year's event.

Last year we had 300 attendees  
at our super friendly picnic, and we  
know that this year we will have more!

Please email

[smarsden@helston.tpacademytrust.org](mailto:smarsden@helston.tpacademytrust.org)  
if you are interested, or have any questions.

We will provide a PA and Sound Engineer  
to ensure you sound fabulous!



Helston Community College PTFA

**£5  
per  
pitch**

# CAR BOOT SALE

**£5  
per  
pitch**



**Sunday 25th May  
9.30am - 12.00pm**

*(sellers can set up from 9.00am)*

**Join us on the last Sunday  
of every month**

**HCC North Site Main  
Car Park**

For more information please email:  
[ptfa@helston.tpacademytrust.org](mailto:ptfa@helston.tpacademytrust.org)



Helston Community College PTFA

# SUMMER

# FAYRE

**Saturday 28th June**

**11.00am - 3.00pm**

- Stalls • BBQ • Raffle • Games**  
**• Emergency Services**  
**• Entertainment • Bouncy Castles**  
**and much, much more!!**

Calling all local businesses, stall holders  
musicians, ice cream vendors - book your  
pitch now to avoid disappointment!

For more information please email:  
[ptfa@helston.tpacademytrust.org](mailto:ptfa@helston.tpacademytrust.org)



Helston Community College PTFA

*presents*

# BINGO NIGHT

**Join us for Bingo Night!**

**Wednesday 18th June**

Doors open 6.00pm, eyes down 6.30pm

HCC North Site Hall

**Dabbers at the ready!**

**£10 a book**

**Childrens Games • Cash Prizes\* • Refreshments!**

All monies raised in aid of the PTFA.

\*Please note that cash prizes can only be claimed by an adult



# JUNIOR GIG ROWING TASTER SESSION

AGE 10 - 16? JOIN US FOR A FREE  
TASTER SESSION

**AGE 10 - 16?**

Join us for a free taster session on:  
Saturday 10th May 3.30pm - 6pm  
or

Saturday 24th May 2pm - 5pm  
North Quay, Hayle  
Outside Gilbert's TR27 4DD



Join one of our junior  
rowing taster sessions!  
Make friends, stay fit,  
and enjoy the thrill of  
competition.

Wear layers and sturdy  
shoes you don't mind  
getting wet. See you  
there!

**MORE INFO**

**[WWW.FB.COM/HAYLEGIGCLUB](http://WWW.FB.COM/HAYLEGIGCLUB)**

Scan Qr for entry form





# May Half Term Forest School

Carwynnen, Camborne

Friday 30th May

9:30 - 3:30

£35 per child (morning and  
afternoon snack included)

✉ [naturesplayground@hotmail.com](mailto:naturesplayground@hotmail.com)

Join us on



@cornwallsnatureplayground





£80 FOR 3 DAYS  
OR £30 A DAY

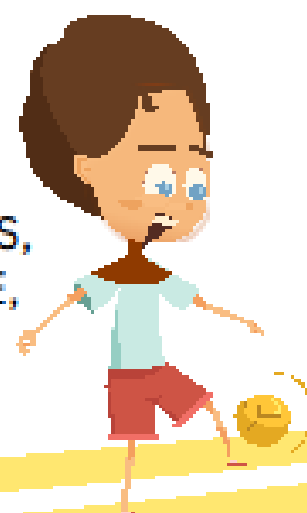
## MAY HALF TERM SUPER CAMPS

Come and take part in our EdVenture holiday provision, offering children a fantastic opportunity to build friendships through team sports and outdoor adventures, and explore their creativity with themed group games and arts & crafts.

MAY HALF TERM SUPER CAMP:  
**TUES 27TH - THUR 29TH MAY**

## 3 DAY SUPER CAMP 5-7 YEARS | 8+ YEARS

RANGE OF ACTIVITIES INCLUDING:  
DODGEBALL, DEN BUILDING, GYM,  
TENNIS, ARTS & CRAFTS, COMIC BOOKS,  
JEWELLERY, RUGBY, ASSAULT COURSE,  
CAPTURE THE FLAG, BOARD GAMES,  
FILMS, TEAM GAMES, ORIENTERRING  
TREASURE HUNT & LOTS MORE!



OTHER ACTIVITIES ALSO AVAILABLE:  
NETBALL, FOOTBALL, WATERSPORTS

FOR MORE DETAILS ON THE COURSES & HOW TO BOOK:

**WWW.MYEDVENTURE.CO.UK**  
**01326 372379**